

Notenheft



Sonate 1977 (Jazz)

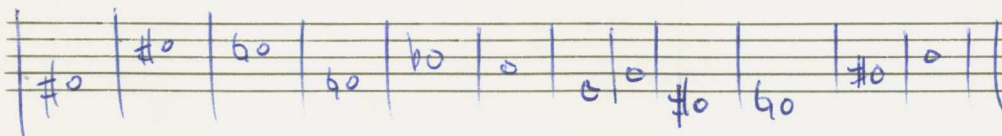
für Flöte (Altflöte)

Piano + (E-Piano)

Baß und (ad lib. dazu

Schlagwerk (4 Posaunen)  
und  
Vibraphon)

Adolf Scherbaum



[ Pedal ] gilt auch für Vibraphon  
wenn Posaunen dabei)

(bedeutet  
Piano hier  
tacet)  
(rechte Hand.)

Satz (1)

Molto assai

(A)

Flöte

Piano

Bass

Schlagw

Normal piano

(P)

(P) 1133

Piano

Bass

Schlagw

(P)

Handwritten musical score for the first system. The top staff is a melody line in treble clef with a key signature of one sharp (F#) and a common time signature. It contains three measures of music with various notes, rests, and accents. The piano accompaniment consists of three staves: the first two are grand staff notation (treble and bass clefs) with chords and some melodic fragments; the third is a bass line with notes and rests. A purple bracket on the left side groups the piano accompaniment staves.

Handwritten musical score for the second system. The top staff continues the melody line with dynamic markings 'f' and 'p'. The piano accompaniment continues with chords and bass lines. A purple bracket on the left side groups the piano accompaniment staves. The system concludes with a double bar line and a final chord.

B

Handwritten musical score for the first system of 'Sonate (Jazz) für Flöte (Altflöte), Piano (E-Piano), Bass und Schlagwerk, SWV 1153 (1977)'. The system consists of five staves. The top staff is the flute part, featuring a melodic line with slurs and accents. The second and third staves are the piano accompaniment, with a purple brace on the left. The piano part includes chords and rhythmic patterns. The fourth staff is the bass line, and the fifth staff is the drum part. The system is divided into two measures by a vertical bar line.

Handwritten musical score for the second system of 'Sonate (Jazz) für Flöte (Altflöte), Piano (E-Piano), Bass und Schlagwerk, SWV 1153 (1977)'. The system consists of five staves. The top staff is the flute part, featuring a melodic line with slurs and accents. The second and third staves are the piano accompaniment, with a purple brace on the left. The piano part includes chords and rhythmic patterns. The fourth staff is the bass line, and the fifth staff is the drum part. The system is divided into two measures by a vertical bar line.

Handwritten musical score for the first system. The top staff (flute) contains a melodic phrase with a slur and an accent (^) over the final note. The piano accompaniment consists of three staves: the upper two staves show chords and bass notes, while the lower staff shows a bass line with slurs and accents. A purple bracket is on the left side of the piano part.

(C)

Handwritten musical score for the second system. The top staff (flute) continues the melodic line with a slur and an accent (^). The piano accompaniment continues with chords and bass notes. A purple bracket is on the left side of the piano part, and a purple arc is on the right side of the piano part.

Handwritten musical score for the first system, consisting of five staves. The notation includes notes, rests, and dynamic markings such as  $f$  and  $ff$ . A purple bracket is drawn on the left side, encompassing the first two staves. The first staff has a circled  $f$  and a sharp sign. The second staff contains several chords with accents. The third staff has a sharp sign and a note. The fourth staff has a note and a dynamic marking  $f$ . The fifth staff has a triplet of eighth notes and a dynamic marking  $f$ .

Handwritten musical score for the second system, consisting of five staves. The notation includes notes, rests, and dynamic markings such as  $ff$  and  $f$ . A purple bracket is drawn on the left side, encompassing the first two staves. The first staff has a circled  $ff$  and a sharp sign. The second staff contains several chords with accents. The third staff has a note and a dynamic marking  $f$ . The fourth staff has a note and a dynamic marking  $f$ . The fifth staff has a note and a dynamic marking  $f$ . A purple word "Solo" is written above the second staff in the third measure.

Handwritten musical score for the first system, featuring piano accompaniment for the first four staves. The notation includes chords, eighth notes, and rests.

(D)

Handwritten musical score for the second system, featuring a solo section for the first staff and piano accompaniment for the remaining staves. The solo part includes triplets and sixteenth notes.





Handwritten musical score for the first system, consisting of five staves. The top staff is in treble clef and contains a melodic line with notes marked with accents and a circled sharp sign. The second staff is in treble clef and contains a similar melodic line. The third staff is in bass clef and contains a bass line with notes marked with accents and a circled sharp sign. The fourth and fifth staves are in bass clef and contain a bass line with notes marked with accents and a circled sharp sign. A large purple bracket on the left side groups the first three staves. A purple line is drawn across the first two staves, and another purple line is drawn across the third and fourth staves.

Handwritten musical score for the second system, consisting of five staves. The top staff is in treble clef and contains a melodic line with notes marked with accents and a circled sharp sign. The second staff is in treble clef and contains a similar melodic line. The third staff is in bass clef and contains a bass line with notes marked with accents and a circled sharp sign. The fourth and fifth staves are in bass clef and contain a bass line with notes marked with accents and a circled sharp sign. A large purple bracket on the left side groups the first three staves. A purple line is drawn across the first two staves, and another purple line is drawn across the third and fourth staves.

Handwritten musical score for the first system. The top staff (flute) contains a melodic line with several phrases, some marked with accents (^) and slurs. The piano accompaniment consists of chords in the right hand and bass notes in the left hand. A large purple bracket on the left side groups the piano parts. The system concludes with a fermata over the final notes.

F

CODA

Handwritten musical score for the second system. It continues the melodic and harmonic material from the first system. The piano accompaniment includes chords and bass notes. The system ends with a CODA section, indicated by a circle containing the word "CODA" and a double bar line with repeat dots. A large purple bracket on the left side groups the piano parts, and a vertical purple line on the right side marks the end of the piece.

1.

5

Solo

din

p

2.

güt + din

4

Solo

güt + din

p

langsam  
(Alt Flöte) klingend nicht!

Handwritten musical score for the first system. The Flute part (top staff) begins with a circled 'p' and contains notes: G4, A4, B4, C5, B4, A4, G4. The Piano part (middle staves) shows a 4/4 time signature, a circled 'p', and notes: G4, A4, B4, C5, B4, A4, G4. The Bass part (bottom staff) shows a circled 'p' and notes: G4, A4, B4, C5, B4, A4, G4. The Drum part (bottom staff) shows a circled 'p' and notes: x, x, x, x. A purple bracket on the left side groups the Piano and Bass parts.

Handwritten musical score for the second system. The Flute part (top staff) begins with a circled 'p' and contains notes: G4, A4, B4, C5, B4, A4, G4. The Piano part (middle staves) shows a circled 'p' and notes: G4, A4, B4, C5, B4, A4, G4. The Bass part (bottom staff) shows a circled 'p' and notes: G4, A4, B4, C5, B4, A4, G4. The Drum part (bottom staff) shows a circled 'p' and notes: x, x, x, x. A purple bracket on the left side groups the Piano and Bass parts.

Handwritten musical score for the first system. The system consists of five staves. The top staff is for the Flute (treble clef), the second and third staves are for the Piano (treble and bass clefs), the fourth staff is for the Bass (bass clef), and the fifth staff is for the Drum set (percussion clef). The piano part is marked with a purple bracket on the left. The bass part has a circled '7' at the end of the system.

Handwritten musical score for the second system. The system consists of five staves. The top staff is for the Flute (treble clef), the second and third staves are for the Piano (treble and bass clefs), the fourth staff is for the Bass (bass clef), and the fifth staff is for the Drum set (percussion clef). The piano part is marked with a purple bracket on the left.

K

Handwritten musical score for the first system. The top staff is a treble clef with a key signature of one flat (B-flat) and a common time signature. It contains a melodic line starting with a quarter note G4, followed by a half note A4, and a dotted quarter note B4. A purple brace groups the second and third staves, which are also in treble clef and contain piano accompaniment. The second staff has a dynamic marking 'f' and a slur over a quarter note G4. The third staff has a dynamic marking 'f' and a slur over a quarter note G4. The fourth staff is a bass clef with a common time signature, containing a bass line with quarter notes G2, A2, and B2. The fifth staff is a grand staff with a treble clef and a common time signature, containing a complex rhythmic pattern with slurs and dynamic markings. A circled 'K' is written above the first staff. A circled 'P' is written above the second staff.

Handwritten musical score for the second system. The top staff is a treble clef with a key signature of one flat (B-flat) and a common time signature. It contains a melodic line starting with a quarter note G4, followed by a half note A4, and a dotted quarter note B4. A purple brace groups the second and third staves, which are also in treble clef and contain piano accompaniment. The second staff has a dynamic marking 'f' and a slur over a quarter note G4. The third staff has a dynamic marking 'f' and a slur over a quarter note G4. The fourth staff is a bass clef with a common time signature, containing a bass line with quarter notes G2, A2, and B2. The fifth staff is a grand staff with a treble clef and a common time signature, containing a complex rhythmic pattern with slurs and dynamic markings. A circled 'P' is written above the second staff.

Handwritten musical score for the first system, consisting of five staves. The top staff is in treble clef and contains a melodic line with notes marked with accents (^) and slurs. The second staff is in treble clef and contains a melodic line with notes marked with accents (^) and slurs. The third staff is in bass clef and contains a bass line with notes marked with accents (^) and slurs. The fourth staff is in bass clef and contains a bass line with notes marked with accents (^) and slurs. The fifth staff is in bass clef and contains a bass line with notes marked with accents (^) and slurs. A purple bracket is drawn on the left side, encompassing the second, third, and fourth staves. A circled 'f' is written on the second staff. A circled 'f' is written on the fourth staff. A circled 'f' is written on the fifth staff.

Handwritten musical score for the second system, consisting of five staves. The top staff is in treble clef and contains a melodic line with notes marked with accents (^) and slurs. The second staff is in treble clef and contains a melodic line with notes marked with accents (^) and slurs. The third staff is in bass clef and contains a bass line with notes marked with accents (^) and slurs. The fourth staff is in bass clef and contains a bass line with notes marked with accents (^) and slurs. The fifth staff is in bass clef and contains a bass line with notes marked with accents (^) and slurs. A purple bracket is drawn on the left side, encompassing the second, third, and fourth staves. A circled 'L' is written on the right side of the top staff. The text "(2te x gut ----)" is written above the top staff. A circled 'p' is written on the third staff. A circled 'p' is written on the fourth staff. A circled 'p' is written on the fifth staff.



*(frei)*

fp =

p

fp

M

fp

p

fp

Da capo  
al ♩

CODA

Handwritten musical score for the first system, including a Flute part and a Piano accompaniment. The piano part features a triplet in the bass line. Annotations include "f" (forte) and "1+ tacet".

Handwritten musical score for the second system, continuing the Flute and Piano parts. The Flute part has several slurs and accents. The piano part includes a circled 'N' at the end of the system. A large purple bracket on the right side of the system indicates a section.

(gut)

Handwritten musical score for the first system. The piano part is on the left, marked with a purple bracket and the number '8.6'. The flute part is on the right, showing notes and rests. The system is divided into three measures.

Handwritten musical score for the second system. The piano part is on the left, marked with a purple bracket. The flute part is on the right, starting with the word 'frei' and ending with a circled 'Fine'. Below the piano part, there is a section labeled 'freies Solo (mit hartem Abschlag)' with a wavy line indicating a free solo.

Satz [2]

Altflöte (frei - langsam) *richtig notiert (in G)*

(auf 4 Halbnoten) sehr getragen

Handwritten musical score for the first system. The top staff is for the flute, showing a melodic line with slurs and accents, and the instruction "(Klingend notiert)". The middle staff is for the piano, starting with a circled "pp" and the instruction "(E-Piano)", followed by a series of chords. The bottom staff is for the bass, featuring a circled "p" and triplet patterns. A purple bracket on the left side groups the piano and bass staves.

Handwritten musical score for the second system. The top staff continues the flute melody with slurs and accents. The middle staff shows piano accompaniment with chords. The bottom staff continues the bass line with triplet patterns. A purple bracket on the left side groups the piano and bass staves.

Handwritten musical score for the first system. The top staff is a flute melody with accents and slurs. The piano accompaniment consists of chords in the right hand and a triplet in the left hand. The bass line features a triplet and fingerings (1, 1, 1, 1).

Q

Handwritten musical score for the second system. The top staff is a flute melody with accents and slurs. The piano accompaniment consists of chords in the right hand and a triplet in the left hand.

Handwritten musical score for the first system, consisting of five staves. The top staff is in treble clef with a key signature of two flats (Bb, Eb) and a common time signature. It contains a melodic line with slurs and accents. The second and third staves are grouped by a purple brace on the left, indicating they are for piano accompaniment. The second staff contains chords with flats (Bb, Eb, Ab) and a dynamic marking of *mf*. The third staff contains a triplet of eighth notes. The fourth staff contains a dynamic marking of *fp* and a series of rhythmic notations: 2, 9, 9, 9, 2. The fifth staff contains a dynamic marking of *fp* and a series of rhythmic notations: 2, 9, 9, 9, 2.

Handwritten musical score for the second system, consisting of five staves. The top staff is in treble clef with a key signature of two flats (Bb, Eb) and a common time signature. It contains a melodic line with slurs and accents, ending with a circled 'R' (ritardando) marking. The second and third staves are grouped by a purple brace on the left, indicating they are for piano accompaniment. The second staff contains chords with flats (Bb, Eb, Ab) and a dynamic marking of *fp*. The third staff contains chords with flats (Bb, Eb, Ab) and a dynamic marking of *fp*. The fourth staff contains a series of rhythmic notations: 2, 9, 9, 9, 2. The fifth staff contains a series of rhythmic notations: 2, 9, 9, 9, 2.

Bass Solo (frei)

Handwritten musical notation for the first system, featuring a piano part with dynamic markings *up*, *f*, and *(p)*.

Handwritten musical notation for the second system, including piano and bass parts with dynamic markings *f*, *(p)*, and *f*.

Handwritten musical notation for the third system, primarily piano part with dynamic markings *f* and *f*.

Handwritten musical notation for the fourth system, including piano and bass parts. The piano part ends with a circled *(ff)* and the bass part with a circled *(p)*.

*(S)*  
Ad. al  
Fine!